



# Installation Guide

## Precision Link 2.6<sup>®</sup>

### With

## USB Cable

**Disclaimer:**

This installation guide is a self help guide to assist you to successfully install the USB driver and Precision Link<sup>®</sup> 2.6. This will enable you to download data from your Abbott blood glucose meter to Precision Link<sup>®</sup> 2.6.

Users should be aware that Precision Link<sup>®</sup> 2.6 is merely an information management tool. It does not itself provide diagnostic information, nor does it give advice on the management of diabetes. It is therefore not intended to replace the support of a healthcare professional. Home users should always consult their healthcare professional if they have any queries or concerns about their diabetes management.

Ask your healthcare professional how an Optium Xceed or Freestyle Lite blood glucose meter may assist you. Always read the label and use only as directed.

---

---

## Precision Link 2.6

---

---

### INTRODUCTION:

The contents of this document are designed to assist the user to successfully install the USB drivers, Precision Link® 2.6 and verify that the installation has been successful.

### USER SKILL LEVEL:

The information contained in this guide assumes the user is familiar with computers and has a low to medium skill level.

### REQUIREMENTS CHECK LIST:

For this trouble shooting guide to be of assistance the following pre-requisites are required;

**Operation System:** Windows XP - All editions. (**Note:** Windows Vista is not included in this document)

**Abbott Diabetes Care USB cable Drivers**

**Abbott Diabetes Care USB cable:** - Suitable for your meter.

**One of the following meters;**

Optium Xceed®, and FreeStyle Lite®.

**Precision Link® 2.6 Software.** Follow this link to down load

<http://www.abbottdiabetescare.com.au/register2download.php>

### **VERY IMPORTANT INFORMATION:**

The Abbott USB cable and the USB drivers when installed are “**LOCKED**” to the original USB port during the initial installation. ***You MUST use the same USB PORT every time you down load from your meter.*** If you change the USB port Precision Link® 2.6 will no longer download your data successfully.

**Abbott recommends you label your USB port for use with your meter to ensure continued trouble free successful operation.**

It is possible for both Optium Xceed and FreeStyle lite meters to successfully down load to one P.C. In order to do this you will require a USB cable suitable for each meter, and USB port labelled for use with the particular meter. Remember that the USB cable is locked to the original USB port, if the cables are swapped over the down load will fail.

### **User Security:**

For the USB drivers and Precision Link® 2.6 to be successfully installed the User will require Administrator rights. The installation writes information to the system registry.

---

---

## Precision Link 2.6

---

---

### Contents:

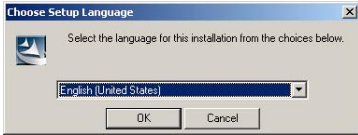
1.	Before beginning the installation: .....	4
2.	Installation of the USB Drivers: .....	4
3.	Unzipping Precision link® 2.6 .....	5
4.	Installing Precision link® 2.6 .....	5
5.	Information for Computers connected to a network.....	7
6.	Customer Service Contact: .....	7

**1. Before beginning the installation:**

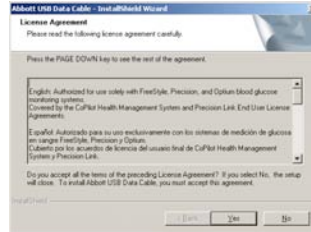
1. Please check that you have all the pre-requisites listed above.
2. Close down all open programs.
3. You have the right User security level to install software. i.e administrator

**2. Installation of the USB Drivers:**

Step 1. Insert to “**Abbott Diabetes Care USB Cable Software V.1**” into your C.D or DVD drive. The installation will begin automatically. Follow the Steps below



Select the Language then Click “OK”



Read the License agreement then Click “Yes”



This is an install message Click “OK”



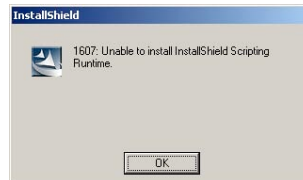
Select **Complete** then Click “Next”



Status of the installation wait



Installation Completed Click “Finish”



If this error message is shown, the user security cannot install this software. See your system administrator.

Step 2. Insert your Abbott USB cable in a USB port – **IMPORTANT INFORMATION**: the USB cable and drivers are “**Locked**” to this port. You **MUST** use this port each time to down load your data. If you change ports the down load will fail. Please label this USB for future reference.

Step 3. Windows will now automatically install the drivers

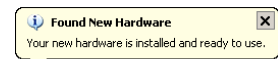


The “Abbott Stereo Plug Cable” is for Freestyle Lite

**OR**



The “Abbott Strip Port Cable” is for Xceed



The cable is ready to use

The LED on your USB cable will now glow Green.

To confirm installation of the USB cable drivers, remove the USB cable wait 5 seconds and then re-plug in the cable. Watch the LED on the on the USB cable as you plug it in;



A) It will initially glow green B) It will then flash orange (up to 3 flashes) C) It will then return to glow green

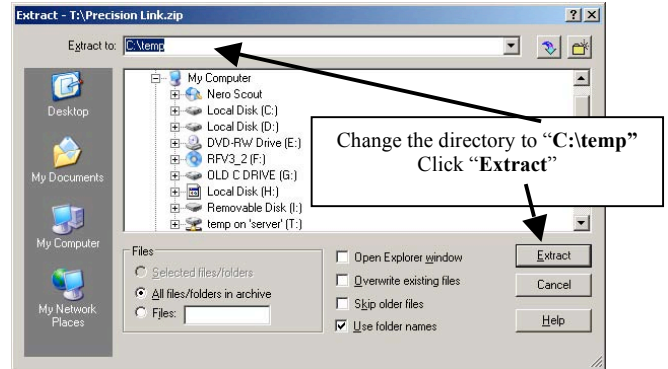
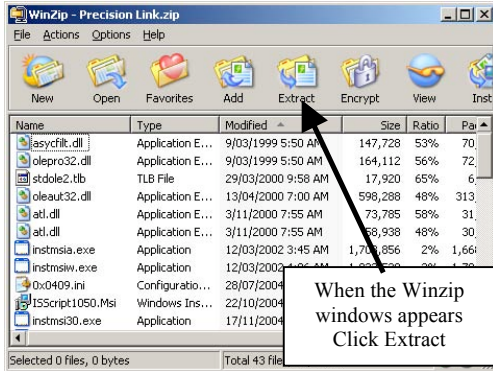
## Precision Link 2.6

The USB drivers and USB cable are now installed

### 3. Unzipping Precision link® 2.6

Step 1. Locate the “*Precision Link.zip*” file which has been downloaded from [www.abbottdiabetescare.com.au](http://www.abbottdiabetescare.com.au). The location will depend which internet browser you use.

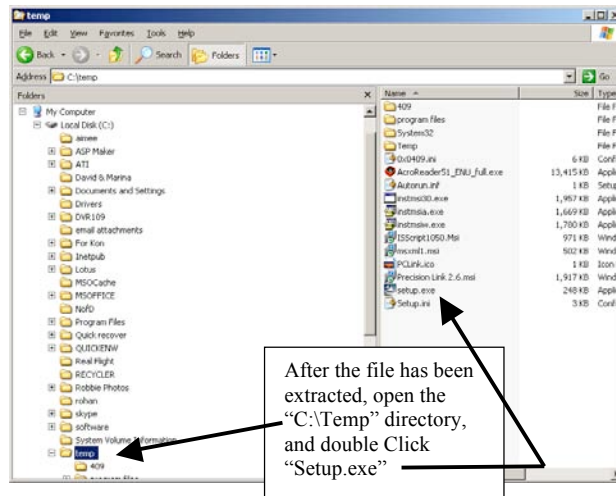
Step 2. Double click “*Precision Link.zip*” to unzip.



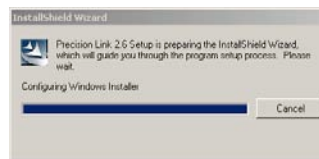
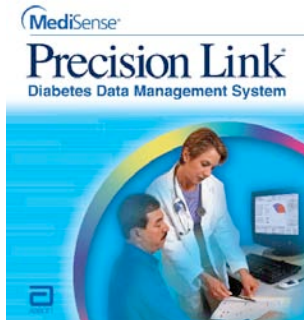
Step 3. Close Winzip

### 4. Installing Precision link® 2.6

Step 1. Open the folder “C:\temp” and locate the “setup.exe” file, then double click

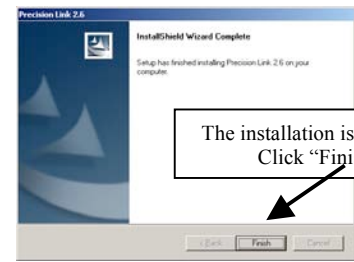
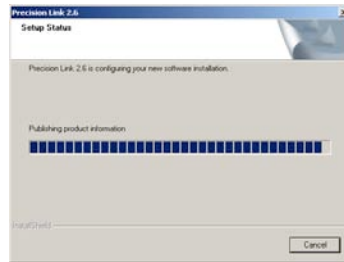
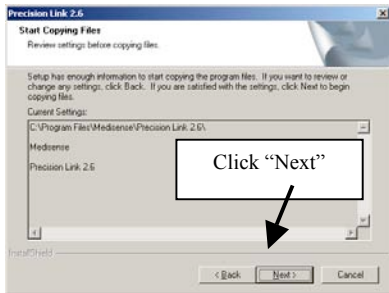
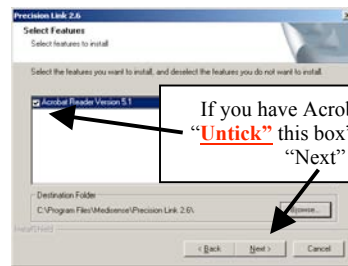
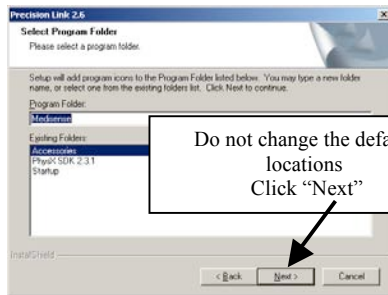
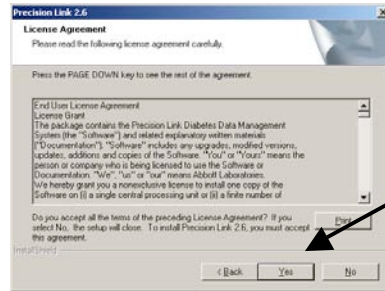
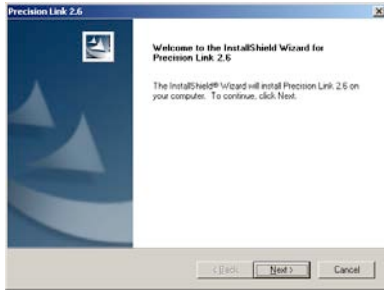


The installation will automatically begin, and the two windows below are shown.



# Precision Link 2.6

When the window below appears click “Next”, and follow the installation steps below



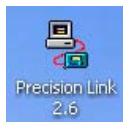
Status of the installation wait

The installation is complete

Precision Link® is now installed and ready for Use

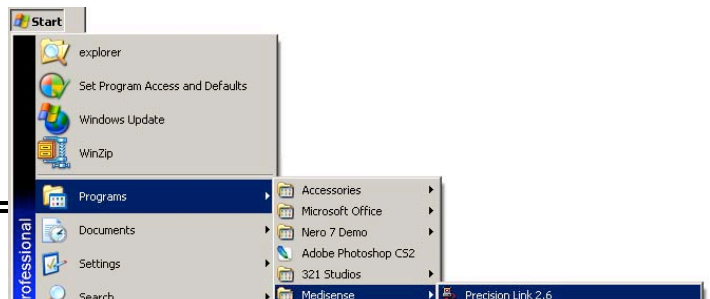
There are two options to launch Precision Link®;

## Option A



OR

## Option B



The following Icon is installed on the Desk Top. Simply double click to

**Precision Link®**

## **5. Information for Computers connected to a network**

There are a number of key requirements in order for Precision Link<sup>®</sup> 2.6 to be installed and run trouble free on a computer network;

1. Precision Link<sup>®</sup> 2.6 installs to the “*C:\Program Files\*” and sets values in the Windows registry, therefore the installation UserID will require administrator rights.
2. Precision Link<sup>®</sup> 2.6 requires a UserID (not the administrator) with a security profile that allows write access to the “*C:\Program Files\Medisense*” folder. If the company security policy limits user access to the C Drive, the UserID can simply be added to the security profile of the “*C:\Program Files\Medisense*” folder. This method still maintains integrity of the company security policy, and allows Precision Link<sup>®</sup> to run successfully.
3. The drivers and USB Cable are LOCKED to the USB port during installation. If a different port is used Precision Link may cease to download correctly.

## **6. Customer Service Contact:**

Should you experience further difficulties downloading blood glucose readings from your Optium Xceed, or Freestyle Lite diabetes monitoring systems, please contact our customer service team on 1800 801 478 (free Call).

---

---